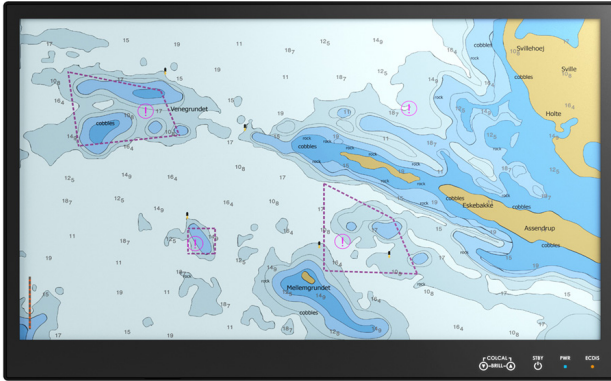


DuraPANEL 27" S-Line

Wide Screen Panel PC for Radar & ECDIS



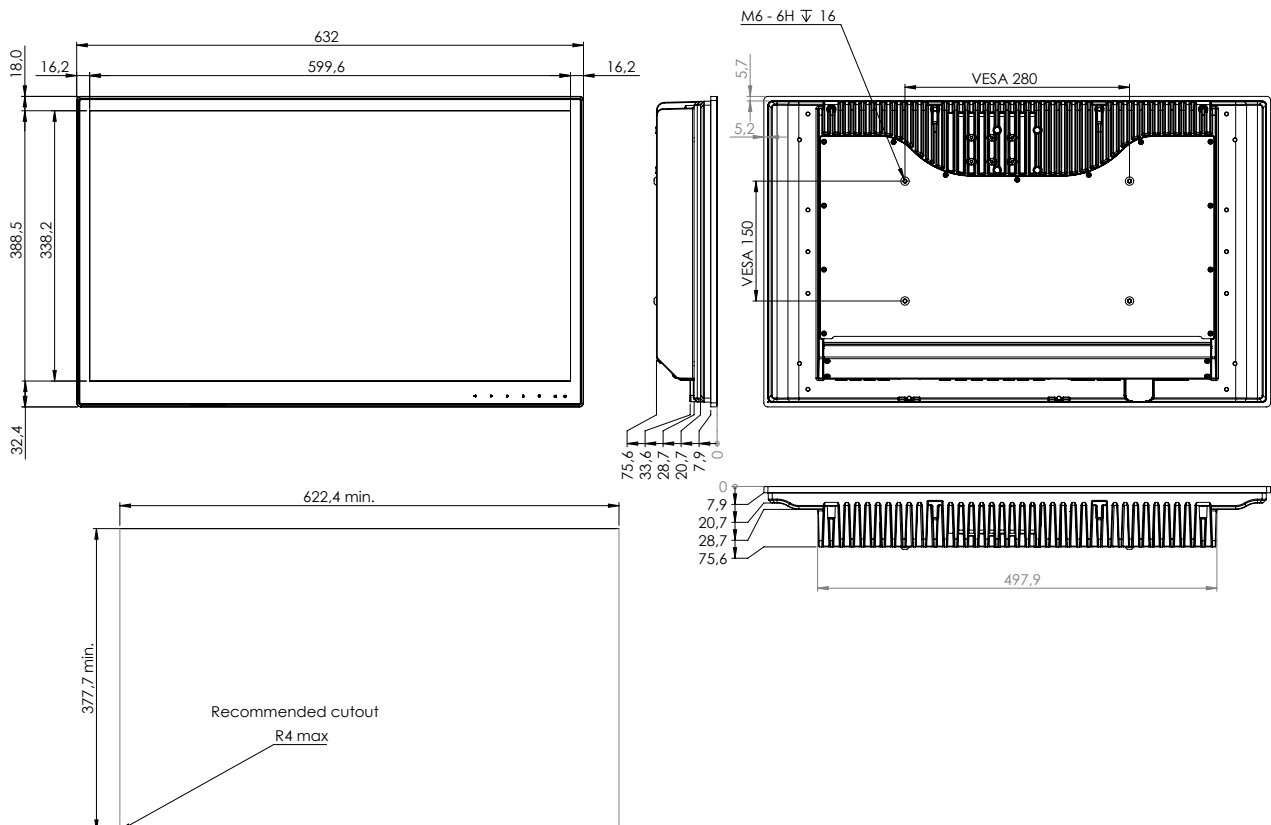
DuraPANEL 27" S-Line Panel PCは、ハードウェアに対して信頼性と耐久性が求められる、船舶・海軍等の用途用にデザインされました。

S-Line プロダクトファミリーは、超スリムなデザイン・ナローベゼル・軽量・低消費電力を特徴とする最新且つコストパフォーマンスの高い製品群です。

- ✓ 60945 Type Approval
- ✓ ECDIS Applications
- ✓ Radar Applications

Mechanical outline

DuraPANEL 27" S-Line



Specifications DuraPANEL 27" S-Line

Display properties

Size	27" wide screen
Aspect ratio	16:9
Active area	597.60 x 336.15 mm
Luminance	350 cd/m ² (typ.)
Contrast	3000:1 (typ.)
Native resolution	1920 x 1080 (full HD)
View angle	89° (L/R/T/B) (typ.)
Glass	Anti reflective

Motherboard

Chipset	Intel® Q670E (12th/13th Gen.)
TPM	Onboard TPM 2.0 IC
Watchdog timer	1-255 steps by software programming
HW monitoring	Temperature, Voltage
Wake-on-LAN/PXE	Yes (WOL/PXE)
Power state	S3, S4, S5
On board graphics	Intel® UHD Graphics 730/770
Graphics supports	DirectX 12, Open GL 4.5, Open CL 2.1

CPU options

Core i3-12100TE	2.1(4.0) GHz 4P cores, TDP 35W
Core i5-12500TE	1.9(4.3) GHz 6P cores, TDP 35W
Core i7-12700TE	1.4(4.6) GHz 8P+4E cores, TDP 35W
Core i3-13100TE	2.4(4.1) GHz 4P cores, TDP 35W
Core i5-13500TE	1.3(4.5) GHz 6P+8E cores, TDP 35W
Core i7-13700TE	1.1(4.8) GHz 8P+8E cores, TDP 35W

Memory and storage

Memory	Up to 64 GB DDR5 RAM, SO-DIMM
Storage ports	2 x SATA 3.0
Storage size	From 128GB SSD up to state of the art

Power supply/power consumption

AC Power	100-240 VAC / 50-60Hz (Nominal Marine)
DC Power	24 VDC (Nominal Marine) optional
AC/DC dual power	AC + DC input combined, optional
Power(P)	<100W

Operator interface front panel

Power	On/standby (press for 5 sec.)
Up	Brightness, adjust backlight up
Down	Brightness, adjust backlight down

OS options

Windows	Win 10 IoT Enterprise 2019/2021 LTSC
Windows	Win 11 IoT Enterprise LTSC 2024

Input/output terminals

DisplayPort	2 x DP 1.2 up to 4096 x 2160 @ 60Hz
HDMI	2 x HDMI 2.0 up to 4096 x 2160 @ 60Hz
Ethernet	2 x Gbit LAN, Intel i210AT, Intel i219LM
USB	4 x USB 3.2 Gen. 2

Input/output options

Touch	P-Cap multi-touch
NMEA	Up to 2 x 4 isolated RS422 (NMEA comp.)
Serial Port	1 x RS232/422/485 (un-isolated)
Digital I/O	4 x Digital input + 4 x Digital output
USB	2 x USB 2.0
Ethernet	1 x Gbit LAN extra

Physical dimensions

Dimensions	632.0 (W) x 388.5 (H) x 76.6 (D) mm
Dimensions in box	800 (W) x 600 (H) x 175 (D) mm
Weight	10 kg 12 kg in box

Environmental

Operating temp.	-15 to 55° C
Storage temp.	-25 to 70° C
Humidity	8 to 95% RH (5 to 90% RH storage)
Protection	IP56 from front - IP22 from rear
Compass SD	180 cm (stand.) 115 cm (steer.)

Options & accessories

ECDIS	Colour calibration for ECDIS applications
Console bracket	Console mount bracket kit (10585-127)
Table bracket	Table mount bracket (10123-027)
Table bracket VESA	Table Mount VESA bracket (07317-000)
Wall bracket VESA	Wall mount VESA bracket (07317-001)
Buzzer	75-85 dBA
Removable SSD	2 x removable SSD trays on rear

Approvals & certificates

Marine	IEC 60945 ed. 4 & IACS E10 rev. 9
ECDIS	IEC 61174 ed. 4
Radar/Navigation	IEC 62388 ed. 2 & IEC 62288 2021
Certificate	DNV EU RO MR, pending

Basic Japan Co., Ltd. 2-42-26-S110 Amanuma, Suginami-ku
Tokyo, Japan, 167-0032
Phone: (+ 81) 3 5335 7651
mail@basicjp.com | <https://www.basicjp.com/>

ISIC A/S | Edwin Rahrs Vej 54 | 8220 Brabrand | Denmark
Phone: (+ 45) 70 20 70 77
isic@isic-systems.com | www.isic-systems.com

BASIC JAPAN
ISIC TRUSTED HARDWARE SYSTEMS