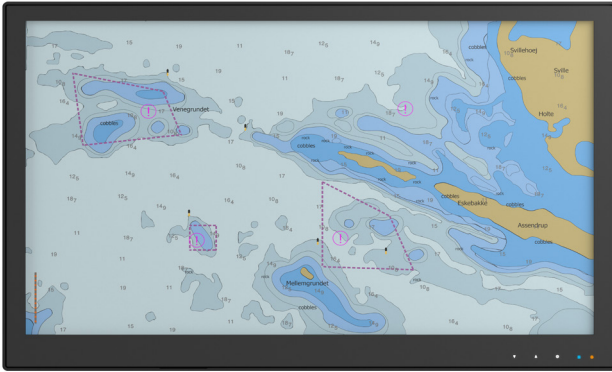


DuraPANEL 24" S-Line

Wide Screen Panel PC for Radar & ECDIS



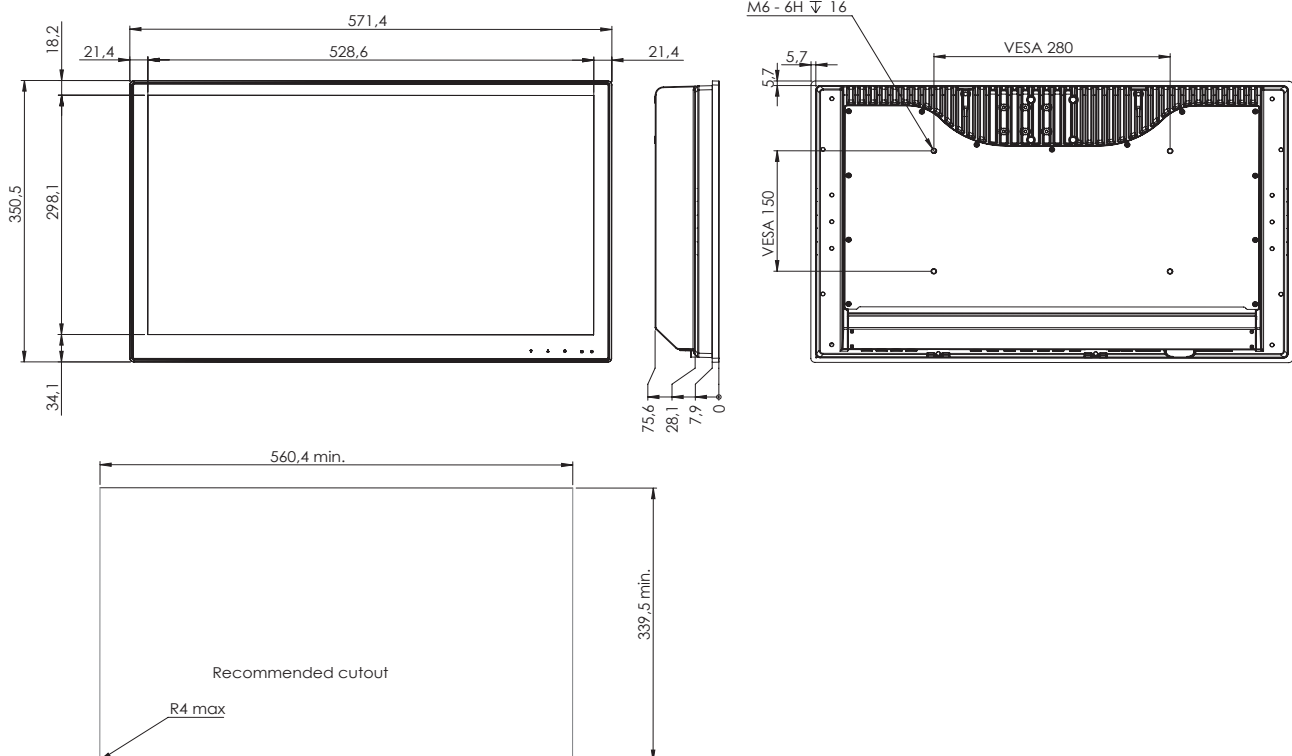
DuraPANEL 24" S-Line Panel PCは、ハードウェアに対して信頼性と耐久性が求められる、船舶・海軍等の用途用にデザインされました。

S-Line プロダクトファミリーは、超スリムなデザイン・ナローベゼル・軽量・低消費電力を特徴とする最新且つコストパフォーマンスの高い製品群です。

- ✓ 60945 Type Approval
- ✓ ECDIS Applications
- ✓ Radar Applications

Mechanical outline

DuraPANEL 24" S-Line



Specifications DuraPANEL 24" S-Line

Display properties

Size	23.8" wide screen
Aspect ratio	16:9
Active area	527.0 x 296.5 mm
Luminance	450 cd/m ²
Contrast	1000:1
Native resolution	1920 x 1080 (full HD)
View angle	89° (L/R/T/B) typical
View distance	944 mm minimum
Glass	Anti reflective and thermal toughened

Motherboard

Chipset	Intel® Q370 Express Chipset (8/9th Gen.)
TPM	dTPM 2.0
Watchdog timer	1-255 steps by software programming
HW monitoring	Temperature, Voltage and Fan
Wake-on-LAN/PXE	Yes (WOL/PXE)
Power state	S3, S4, S5
On board graphics	Intel® UHD 630 (Core Processors)
On board graphics	Intel® UHD 610 (Pentium)
Graphics supports	DirectX 12, Open GL 4.5, Open CL 2.1

CPU Options

Pentium G5400T	3.1 GHz 2 cores, TDP 35W
Core i3-9100TE	3.2 GHz 4 cores, TDP 35W
Core i5-9500TE	3.6 GHz 6 cores, TDP 35W
Core i7-9700TE	3.8 GHz 8 cores, TDP 35W

Memory and Storage

Memory	Up to 32 GB DDR4 RAM, SO-DIMM
Storage ports	SSD - 2 x 2.5" SATA 3.0, 1 x M.2
Storage size	128GB up to state of the art

Power supply/power consumption

AC Power	230 VAC (90-264 VAC / 50-60Hz)
DC Power	24 VDC (18 - 31 VDC) optional
AC/DC dual power	230 VAC + 24 VDC combined optional
Consumption	XX W Typ. XX W Max.

Operator interface front panel

Power	Power on/off (press for 10 sec. to turn off)
Up	Adjust backlight up
Down	Adjust backlight down

Basic Japan Co., Ltd. 2-42-26-S110 Amanuma, Suginami-ku
Tokyo, Japan, 167-0032
Phone: (+ 81) 3 5335 7651
mail@basicjp.com | <https://www.basicjp.com/>

ISIC A/S | Edwin Rahrs Vej 54 | 8220 Brabrand | Denmark
Phone: (+ 45) 70 20 70 77
isic@isic-systems.com | www.isic-systems.com

OS options

Windows	Windows 10 IoT Enterprise LTSC
Linux	Ubuntu

Input/output terminals

DisplayPort out	2 x DP++ up to 3840x2160 @ 60Hz
Ethernet ATM	1 x Gbit LAN, Intel PHY i219LM ATM 12.0
Ethernet	1 x Gbit LAN, Intel i210AT
USB	4 x USB 3.2 Gen. 2 Type A
Audio Mic-in	1 x 3.5 mm Jack
Audio Line-out	1 x 3.5 mm Jack

Input/output options

Touch	P-Cap multi touch
NMEA	Up to 2 x 4 isolated RS422 (NMEA comp.)
Serial Port	RS232/422/485
Digital I/O	4 x Digital input + 4 x Digital output
Auxiliary	1 x 2.5mm Jack

Physical dimensions

Dimensions	572 (W) x 351 (H) x 76 (D) mm
Dimensions in box	670 (W) x 490 (H) x 160 (D) mm
Weight	10 kg 12 kg in box

Environmental

Operating temp.	- 15 to 55° C
Storage temp.	- 25 to 70° C
Humidity	8 to 95% RH (5 to 90% RH storage)
Protection	IP54 from front - IP22 from rear
Compass SD	XXX cm (stand.) XXX cm (steer.)

Options & accessories

ECDIS	Colour calibration for ECDIS applications
Console bracket	Console mount bracket kit /10211-024
Table bracket	Table mount bracket (10123-000)
Table bracket VESA	Table Mount VESA bracket (07317-000)
Wall bracket VESA	Wall mount VESA bracket (07317-001)
Buzzer	75-85 dBA
Removable SSD	2 x removable SSD trays on rear

Approvals & Certificates

Marine	IEC 60945 ed. 4 & IACS E10 rev. 8
ECDIS	IEC 61174 ed. 4
Radar/Navigation	IEC 62388 ed. 2 & IEC 62288 2021
Certificate	DNV Mutual Recognition, Pending