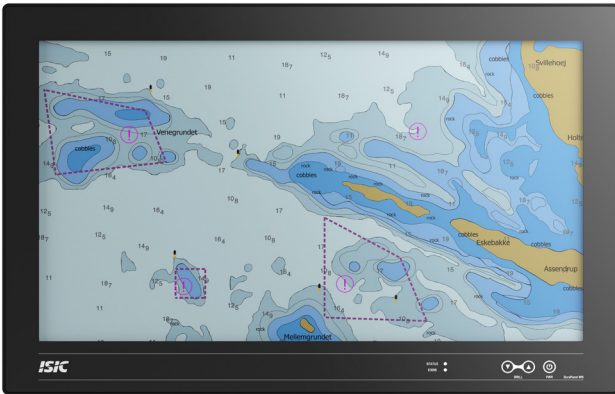


DuraPANEL 24" G-Line

Wide Screen Panel PC for Radar & ECDIS



DuraPANEL 24" G-Line Panel PCは、ハードウェアに対して信頼性と耐久性が求められる、船舶・海軍等の用途にデザインされました。CAT 2 Radar 対応

G-Lineプロダクトファミリーは、製品投入後の長い実績があり、調光キーを備えた前面フルガラスを特徴とする製品です。

- ✓ 60945 Type Approval
- ✓ ECDIS Applications
- ✓ Radar Applications

Mechanical outline

DuraPANEL 24" G-Line

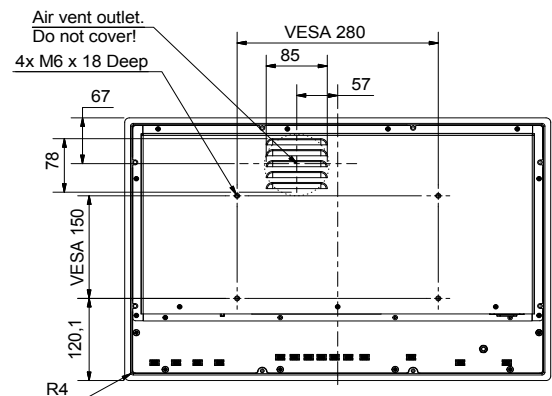
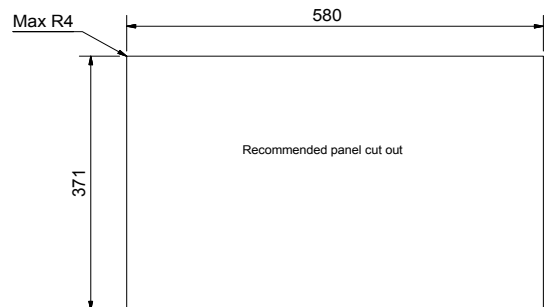
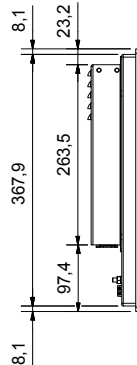
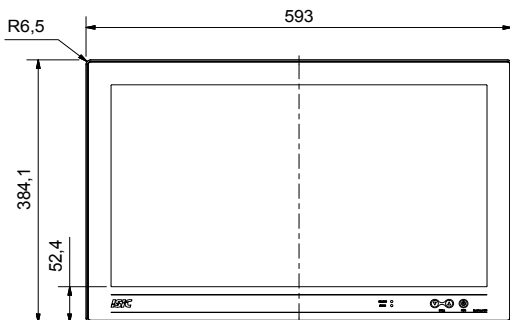
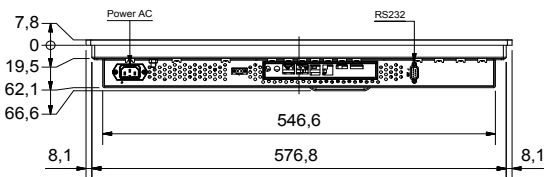
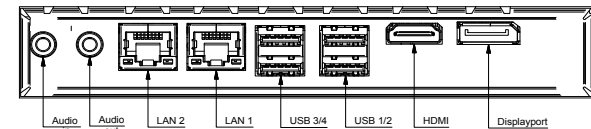


Table and wall brackets - ISIC PN 07317-000 & 07317-001

Specifications DuraPANEL 24" G-Line

Display properties

Size	23.6" wide screen
Aspect ratio	16:9
Active area	521.0 x 293.0 mm
Luminance	250 Cd/m ²
Contrast	3000:1
Native resolution	1920 x 1080 (full HD)
View angle	89° (L/R/T/B) typical
Glass	Anti reflection coated front glass

Motherboard

Chipset	Intel® Q87 Express Chipset 64Bits
TPM	Yes - Infineon SLB9655
Watchdog timer	1-255 steps
HW monitoring	Temperature, Voltage and Fan
Wake-on-LAN/ PXE	Yes (WOL/PXE)
Power state	S3, S4, S5
On board graphics	Intel® HD Graphics, ref. to CPU
Graphics supports	DirectX 11.2, Open GL 4.3 , Open CL 2.0

CPU Options

Celeron G1820TE	2.2 GHz 2 cores, CPUMark 2.230
Core i3-4330TE	2.4 GHz 2 cores, 4 threads, CPUMark 3.224
Core i5-4590T	2.0 GHz 4 cores, 4 threads, CPUMark 5.758
Core i7-4770TE	2.3 GHz 4 cores, 8 threads, CPUMark 8.800

Memory and Storage

Memory	Up to 16 GB DDR3 RAM, SODIMM
Storage	Up to 1.9 TB SSD, SATA

Power supply/power consumption

AC Power	90 - 264 VAC 50-60Hz (standard)
DC Power	18 - 36 VDC (optional)
AC/DC dual power	90 - 264 VAC + 18 - 36 VDC (optional)
Consumption	60 W Typ. 80 W Max.

OS options

Windows 7	Windows 7
Windows 8	Windows 8
Windows 10	Windows 10 IoT
Linux	Ubuntu

Operator interface front panel

Power	Power on/off (press for 10 sec. to turn off)
Up	Adjust backlight up
Down	Adjust backlight down

Input/output terminals

HDMI output	1 x HDMI up to 3840x2160 @ 60 Hz
DispalyPort output	1 x DP female up to 3840x2160 @ 60 Hz
RS 232 serial	1 x 9p D-sub female
Ethernet V-Pro	1 x Gbit LAN, Intel PHY I217LM
Ethernet	1 x Gbit LAN, Intel I210AT
USB	4 x USB 3.0 (an additional 6 x USB 2.0 internal)
Audio Line-out	1 x 3.5 mm Jack
Audio Mic-in	1 x 3.5 mm Jack
Audio Buzzer	1 x build-in audio buzzer (75-85 dB(A) / 1m)

Physical dimensions

Dimensions	593 (W) x 384 (H) x 68 (D) mm
Dimensions in box	750 (W) x 520 (H) x 160 (D) mm
Weight	13 kg 15 kg in box

Environmental

Operating temp.	- 15 to 55° C
Storage temp.	- 25 to 70° C
Humidity	8 to 95% relative humidity
Protection	IP65 from front - IP21 from rear
Compass SD	205 cm (stand.) 125 cm (steer.)

Options & accessories

Touch	P-Cap multi touch (1 x USB touch control)
ECDIS	Colour calibration for ECDIS applications
NMEA	2 x NMEA serial port module
Wall bracket	Wall mount VESA bracket (07317-001)
Table bracket	Table mount VESA bracket (07317-000)

Approvals & Certificates

CE	EN 61000-6-2 & EN 61000-6-4
Marine	IEC 60945 ed. 4 & IACS E10 rev. 8
ECDIS	IEC 61174 ed. 4
Radar/Navigation	IEC 62388 ed. 2 & IEC 62288 ed. 2
Certificate	DNV Mutual Recognition

Basic Japan Co., Ltd. 2-42-26-5110 Amanuma, Suginami-ku
Tokyo, Japan, 167-0032
Phone: (+ 81) 3 5335 7651
mail@basicjp.com | <https://www.basicjp.com/>

ISIC A/S | Edwin Rahrs Vej 54 | 8220 Brabrand | Denmark
Phone: (+ 45) 70 20 70 77
isic@isic-systems.com | www.isic-systems.com

BASIC JAPAN
ISIC TRUSTED HARDWARE SYSTEMS