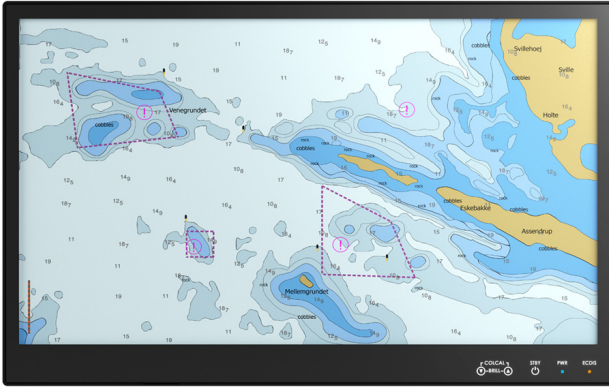


DuraMON 27" S-Line

Wide Screen Monitor for Marine Applications



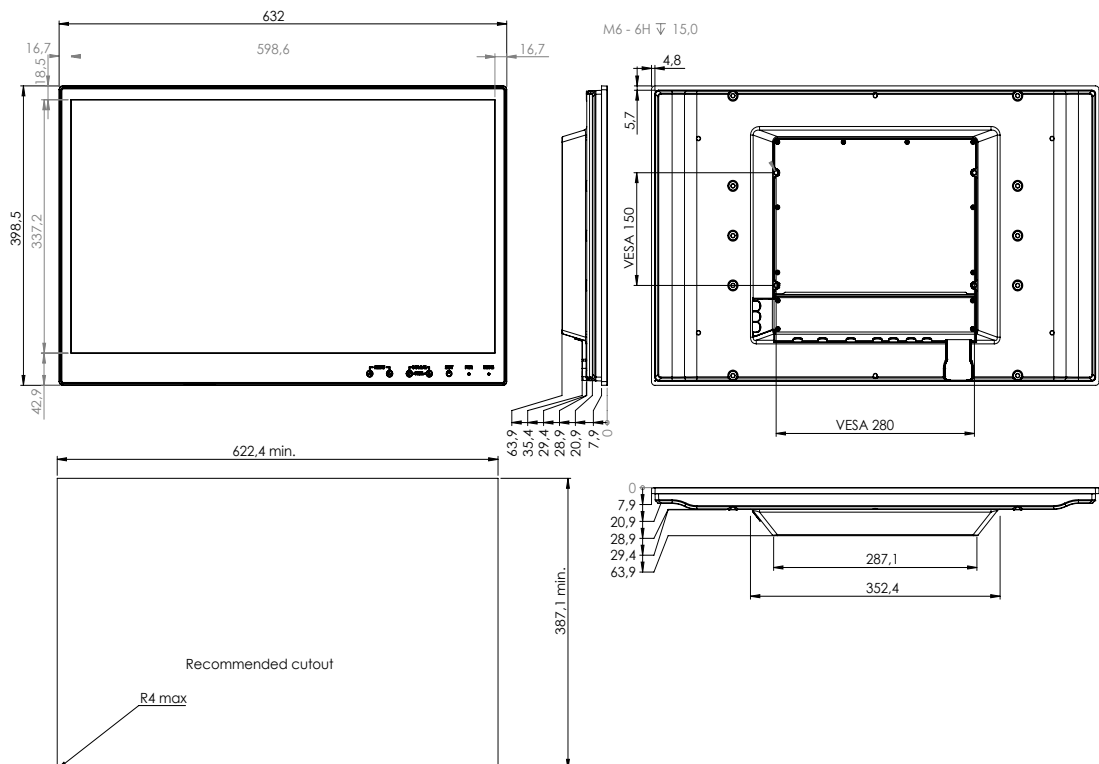
DuraMON 27" S-Line モニターはハードウェアに対して信頼性と耐久性が求められる、船舶・海軍等の用途用にデザインされました。

The S-Line プロダクトファミリーは、超スリムなデザイン・ナローベゼル・軽量・低消費電力を特徴とする最新且つコストパフォーマンスの高さが特徴の製品です。

- ✓ 60945 Type Approval
- ✓ ECDIS Applications
- ✓ Radar Applications

Mechanical outline

DuraMON 27" S-Line



Table/ceiling bracket available - ISIC PN 10123-027

Specifications DuraMON 27" S-Line

Display properties

Size	27.0" wide screen
Aspect ratio	16:9
Active area	597.9 x 336.3 mm
Luminance	350 Cd/m2 typical
Contrast	3000:1 typical
Native resolution	1920 x 1080 (Full HD)
View angle	89° (L/R/T/B) typical
Glass	Anti reflective and thermal toughened

Input/output terminals

DP video input	2 x DP 1.2
USB	1 x USB type B, touch & virtual serial COM
AUX	1 x 2.5 mm jack, remote control - optional
Buzzer	Audio buzzer

Operator control interface & OSD

Power	On/Standby (press for 5 sec. for standby)
Up	Backlight-up
Down	Backlight-down
Select	Menu-select
Back	Menu-back

The above operator controls can be optional (On/Standby; Backlight; Menu)

Power supply / power consumption

AC power	100 - 240 VAC 50/60Hz
DC power	24 VDC - optional
AC/DC dual power	100- 240 VAC & 24 VDC - optional
Typ. Consumption	30 W
Max. Consumption	35 W

Physical dimensions

Dimensions	632.0 (W) x 398.5 (H) x 63.9 (D) mm
Dimensions in box	670 (W) x 490 (H) x 160 (D) mm
Weight	7.0 kg
Weight in box	9.0 kg

Environmental

Operating temp.	- 15 to 55° C
Storage temp.	- 25 to 70° C
Humidity	8 to 95% relative humidity
Protection	IP56 from front - IP22 from rear
Materials encl.	Sea water resistant aluminum
Surface treatment	Black powder coating RAL 9005

Options & Accessories

Console bracket	Console mount bracket kit (10585-027)
Table bracket	Table/ceiling bracket kit (10123-027)
Touch	P-Cap multi touch

Approvals & Certificates

Marine	IACS E10 rev. 9 & IEC 60945 ed. 4
ECDIS	IEC 61174 ed. 4
Radar/Navigation	IEC 62388 ed. 2 & IEC 62288 2021
Certificate	DNV, NK, CCS, others on request
Compass SD	Pending

Basic Japan Co., Ltd. 2-42-26-S110 Amanuma, Suginami-ku
Tokyo, Japan, 167-0032
Phone: (+ 81) 3 5335 7651
mail@basicjp.com | <https://www.basicjp.com/>

ISIC A/S | Edwin Rahrs Vej 54 | 8220 Brabrand | Denmark
Phone: (+ 45) 70 20 70 77
isic@isic-systems.com | www.isic-systems.com

ISIC TRUSTED HARDWARE SYSTEMS