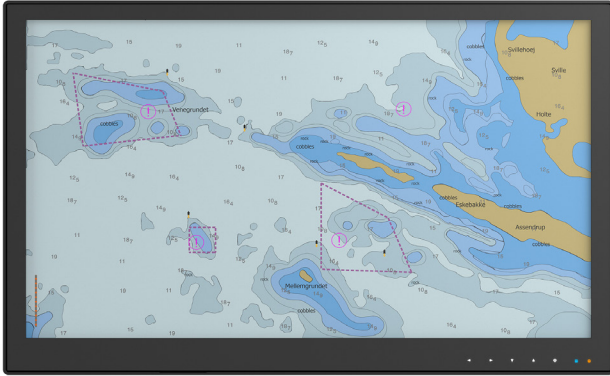


DuraMON 24" S-Line

Wide Screen Monitor for Marine Applications



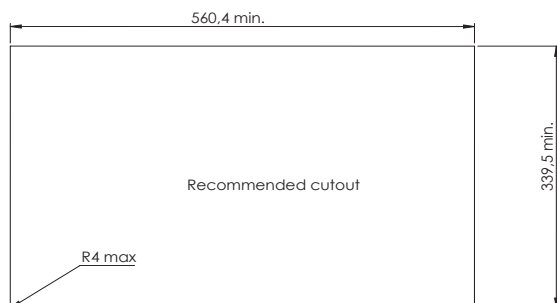
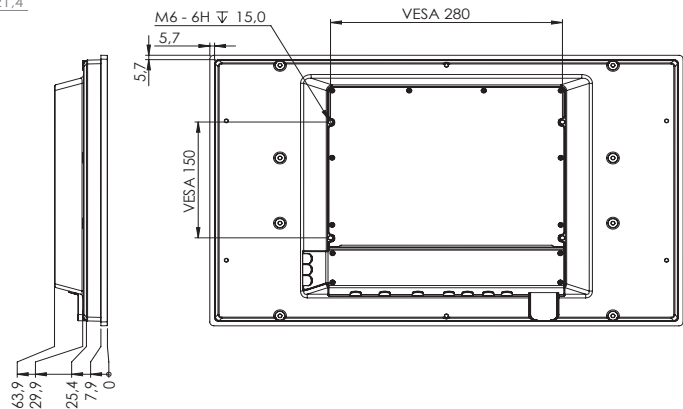
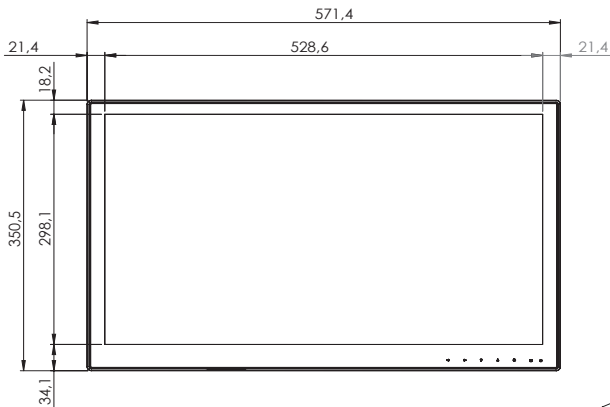
DuraMON 24" S-Line モニターはハードウェアに対して信頼性と耐久性が求められる、船舶・海軍等の用途用にデザインされました。

The S-Line プロダクトファミリーは、超スリムなデザイン・ナローベゼル・軽量・低消費電力を特徴とする最新且つコストパフォーマンスの高さが特徴の製品です。

- ✓ 60945 Type Approval
- ✓ ECDIS Applications
- ✓ Radar Applications

Mechanical outline

DuraMON 24" S-Line



Table/ceiling bracket available - ISIC PN XXXXX-XXX

Specifications DuraMON 24" S-Line

Display properties

Size	23.8" wide screen
Aspect ratio	16:9
Active area	527 x 296.5 mm
Luminance	450 Cd/m2 typical
Contrast	1000:1 typical
Native resolution	1920 x 1080 (Full HD)
View angle	89° (L/R/T/B) typical
Glass	Anti reflective and thermal toughened
Touch	P-Cap multi touch

Input/output terminals

DP video input	2 x DP 1.2
USB	1 x USB type B, Touch & virtual serial COM
AUX	1 x 2.5 mm Jack, remote control - optional

Operator control interface & OSD

Power	Power on/off (press for 10 sec. to turn off)
Up	Navigate menu / adjust backlight up
Down	Navigate menu / adjust backlight down
Select	Navigate menu / Select
Back	Navigate menu / Back

Power supply / power consumption

AC power	100 - 240 VAC 50/60Hz
DC power	24 VDC - optional
AC/DC dual power	100- 240 VAC & 24 VDC - optional
Typ. Consumption	11 W
Max. Consumption	29 W

Physical dimensions

Dimensions	571.4 (W) x 350.5 (H) x 63.9 (D) mm
Dimensions in box	670 (W) x 490 (H) x 160 (D) mm
Weight	8.0 kg
Weight in box	10.0 kg

Environmental

Operating temp.	- 15 to 55° C
Storage temp.	- 25 to 70° C
Humidity	8 to 95% relative humidity
Protection	IP56 from front - IP22 from rear
Materials encl.	Sea water resistant Aluminum
Surface treatment	Black Powder coating RAL 9005

Options & accessories

Console bracket	Console mount bracket kit (10065-000)
Table bracket	Table/ceiling bracket kit (XXXXX-XXX)

Approvals & Certificates

CE mark	EN 61000-6-2 & EN 61000-6-4
Marine	IACS E10 rev. 8 & IEC 60945 ed. 4
Navigation	IEC 62288 ed. 2
Certificate	DNV, LR, ABS,BV, CCS, KR, Class NK
Certificate	PRS, RINA
Compass SD	XX cm (stand.) XX cm (steer.)

Basic Japan Co., Ltd. 2-42-26-S110 Amanuma, Suginami-ku
Tokyo, Japan, 167-0032
Phone: (+ 81) 3 5335 7651
mail@basicjp.com | <https://www.basicjp.com/>

ISIC A/S | Edwin Rahrs Vej 54 | 8220 Brabrand | Denmark
Phone: (+ 45) 70 20 70 77
isic@isic-systems.com | www.isic-systems.com

ISIC TRUSTED HARDWARE SYSTEMS