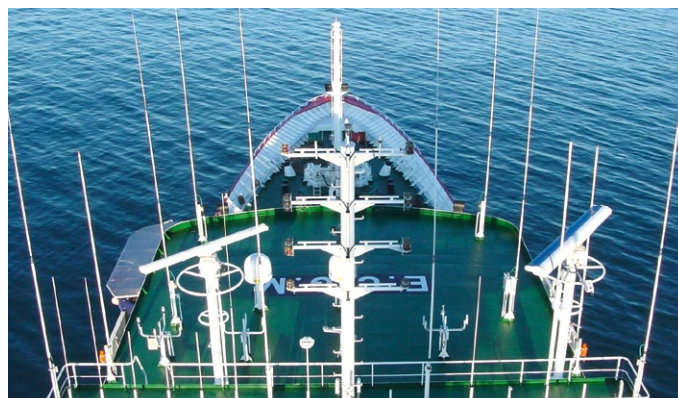


MARINE CATALOGUE

Antennas & Accessories



2025

AC ANTENNAS

 WE CONNECT THE WORLD

**THE WORLD'S
ULTIMATE ANTENNAS.**



AC ANTENNAS
~~~~~ WE CONNECT THE WORLD

Antennas. They mean everything to us.

In a world where two-thirds of the globe is covered by water, marine antenna products are our world.

Since 1970, AC Antennas has been known for our relentless commitment in utilizing our 50+ years of experience towards one pure goal: providing the best antennas in the world.

Today we have a large portfolio of marine, recreational, land based and portable antennas.

Our marine and land based antennas are engineered and manufactured in Denmark to the highest possible quality level for vessels within all the major marine markets. All our marine products are distributed worldwide through our professional partners.

We take pride in our products and our worldwide partners but even more in our loyal and faithful customers throughout decades.

Welcome to our world. Welcome to a world of antennas.

## CX4

100011-T

Professional VHF-antenna recommended by major radio manufacturers:

- Excellent RF specifications
- Exceptional material quality
- The benchmark 0 dBd VHF antenna for the maritime industry
- Recommended for AIS-solutions
- Ideal for land based solutions too
- Option: various antenna versions available (see table)

### Specifications

|              |             |        |               |
|--------------|-------------|--------|---------------|
| Frequency    | Gain        | Power  | VSWR          |
| 146-162.5MHz | 0 dBd       | 150W   | <1.5:1        |
| Connector    | Length      | Weight | Thread        |
| UHF          | 1.26m       | 0.5kg  | 1" and ISO-G1 |
| DC Shorted   | DC Grounded | IP     |               |
| Yes          | Yes         | 68     |               |



## CX3 5/8

130002-T

Professional VHF-antenna recommended by major radio manufacturers:

- Excellent RF specifications
- Exceptional material quality
- The benchmark 3 dBd VHF antenna for the maritime industry
- Recommended for AIS-solutions
- Ideal used for land based solutions too
- Option: various antenna versions available (see table)

### Specifications

|              |             |        |               |
|--------------|-------------|--------|---------------|
| Frequency    | Gain        | Power  | VSWR          |
| 156-162.5MHz | 3 dBd       | 150W   | <1.5:1        |
| Connector    | Length      | Weight | Thread        |
| UHF          | 2.6m        | 0.6kg  | 1" and ISO-G1 |
| DC Shorted   | DC Grounded | IP     |               |
| Yes          | Yes         | 68     |               |



## CX4 types

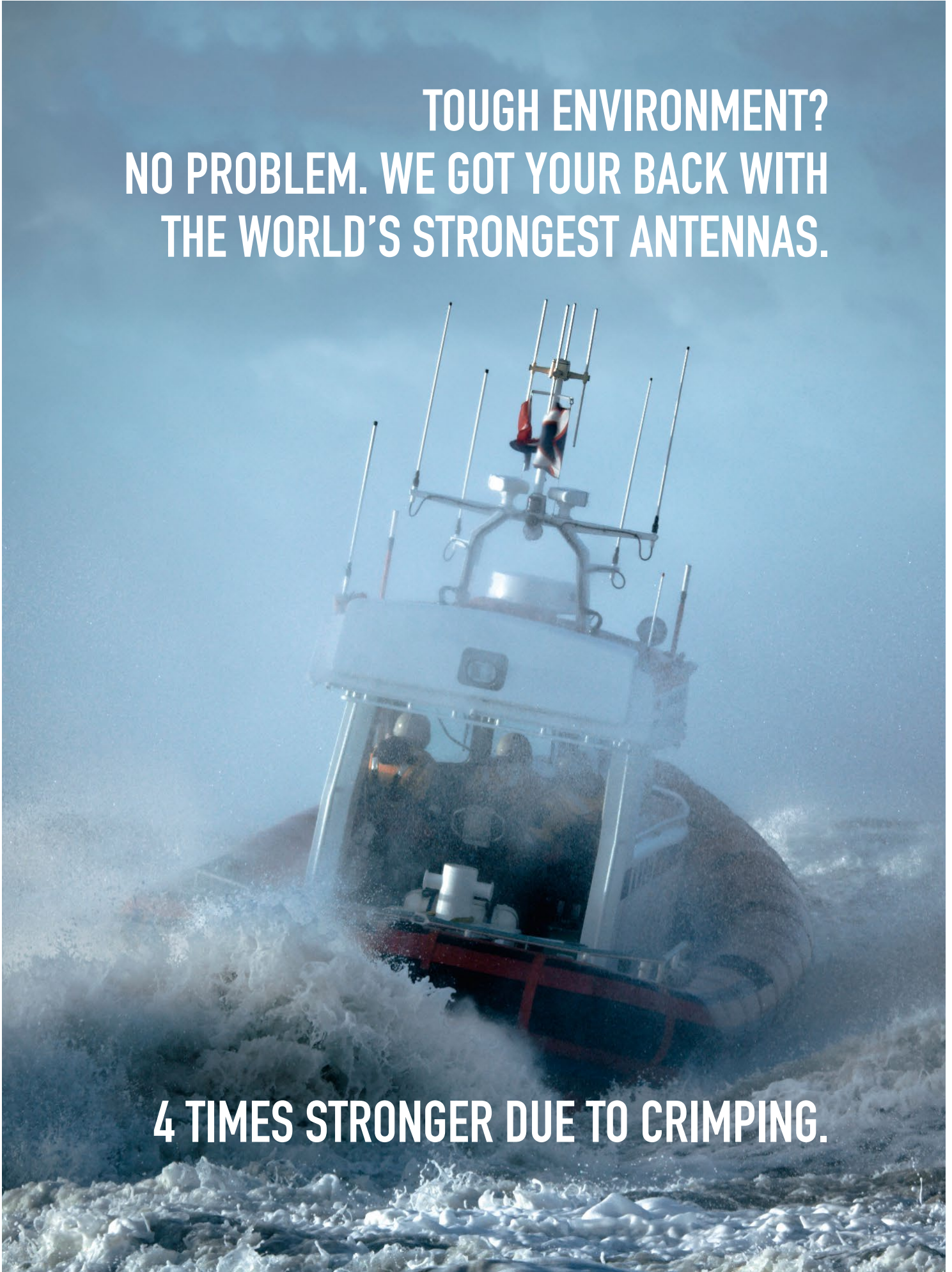
| Product name | Product number | Frequency [MHz] | Connector [female] | Mount included |
|--------------|----------------|-----------------|--------------------|----------------|
| CX4          | 100011-T       | 146-162.5       | UHF                | N239F          |
| CX4-1        | 100012-T       | 146-162.5       | N                  | N239F          |
| CX4-3        | 100015-T       | 146-162.5       | UHF                | -              |
| CX4-6        | 100017-T       | 146-162.5       | N                  | -              |
| CX4-8        | 100018-T       | 135-150         | UHF                | -              |
| CX4-9        | 100019-T       | 118-137         | N                  | -              |
| CX4-11       | 100013-T       | 154-174         | UHF                | -              |
| CX4-12       | 100014-T       | 154-174         | N                  | -              |
| CX4b         | 100022-T       | 146-162.5       | UHF                | N239F          |
| CX4b-1       | 100059-T       | 146-162.5       | N                  | N239F          |
| CX4b-3       | 100061-T       | 146-162.5       | UHF                | -              |
| CX4b-6       | 100023-T       | 146-162.5       | N                  | -              |
| CX4b-8       | 100065-T       | 135-150         | UHF                | -              |
| CX4b-11      | 100066-T       | 154-174         | UHF                | -              |

## CX3 5/8 types

| Product name | Product number | Frequency (MHz) | Connector (female) | Mount included |
|--------------|----------------|-----------------|--------------------|----------------|
| CX3 5/8      | 130002-T       | 156-162.5       | UHF                | N239F          |
| CX3 5/8-1    | 130003-T       | 156-162.5       | N                  | N239F          |
| CX3 5/8-10   | 130004-T       | 156-162.5       | UHF                | -              |

**TOUGH ENVIRONMENT?  
NO PROBLEM. WE GOT YOUR BACK WITH  
THE WORLD'S STRONGEST ANTENNAS.**

**4 TIMES STRONGER DUE TO CRIMPING.**



## KUM480

248000-P

Professional HF/SSB-antenna recommended by major radio manufacturers:

- Excellent RF specifications
- Exceptional material quality
- Works with Automatic Tuner Unit systems
- Side fed
- Available in different versions:
  - Tx/Rx or Rx only: 0.15-30MHz
  - Wire or Coax installation
  - Mast, wall or ferrule mounting
- Ideal for land based solutions too

### Specifications

|           |        |                |                 |
|-----------|--------|----------------|-----------------|
| Frequency | Power  | Max HF Voltage | IP              |
| 1.4-30MHz | 500W   | 9kV            | 66              |
| Sections  | Length | Weight         | Static Capacity |
| 2         | 4.8m   | 1.7kg          | 55pF            |



## KUM600

260000-P

Professional HF/SSB-antenna recommended by major radio manufacturers:

- Excellent RF specifications
- Exceptional material quality
- Works with Automatic Tuner Unit systems
- Side fed
- Available in different versions:
  - Tx/Rx or Rx only: 0.15-30MHz
  - Wire or Coax installations
  - Mast, wall or ferrule mounting
  - 2 or 3 sections
- Ideal for land based solutions too

### Specifications

|           |        |                |                 |
|-----------|--------|----------------|-----------------|
| Frequency | Power  | Max HF Voltage | IP              |
| 1.4-30MHz | 750W   | 9kV            | 66              |
| Sections  | Length | Weight         | Static Capacity |
| 2         | 6m     | 2.4kg          | 70pF            |



## KUM803

280300-T

Professional HF/SSB-antenna recommended by major radio manufacturers:

- Excellent RF specifications
- Exceptional material quality
- Works with Automatic Tuner Unit systems
- Side fed
- Available in different versions:
  - Tx/Rx or Rx only: 0.15-30MHz
  - Wire or Coax installations
  - Mast, wall or deck mounting
  - 2 or 3 sections
- Ideal for land based solutions too

### Specifications

|           |        |                |                 |
|-----------|--------|----------------|-----------------|
| Frequency | Power  | Max HF Voltage | IP              |
| 1.4-30MHz | 1200W  | 18kV           | 66              |
| Sections  | Length | Weight         | Static Capacity |
| 3         | 8m     | 5.7kg          | 100pF           |



## KUM903

290300-T

Professional HF/SSB-antenna recommended by major radio manufacturers:

- Excellent RF specifications
- Exceptional material quality
- Works with Automatic Tuner Unit systems
- Side fed
- Available in different versions:
  - Tx/Rx or Rx only: 0.15-30MHz
  - Wire or Coax installations
  - Mast, wall or deck mounting
  - 2 or 3 sections
- Ideal for land based solutions too

### Specifications

|           |        |                |                 |
|-----------|--------|----------------|-----------------|
| Frequency | Power  | Max HF Voltage | IP              |
| 1.4-30MHz | 1200W  | 18kV           | 66              |
| Sections  | Length | Weight         | Static Capacity |
| 3         | 9m     | 7.3kg          | 100pF           |



## KUM700

270000-P

Professional HF/SSB-antenna recommended by major radio manufacturers:

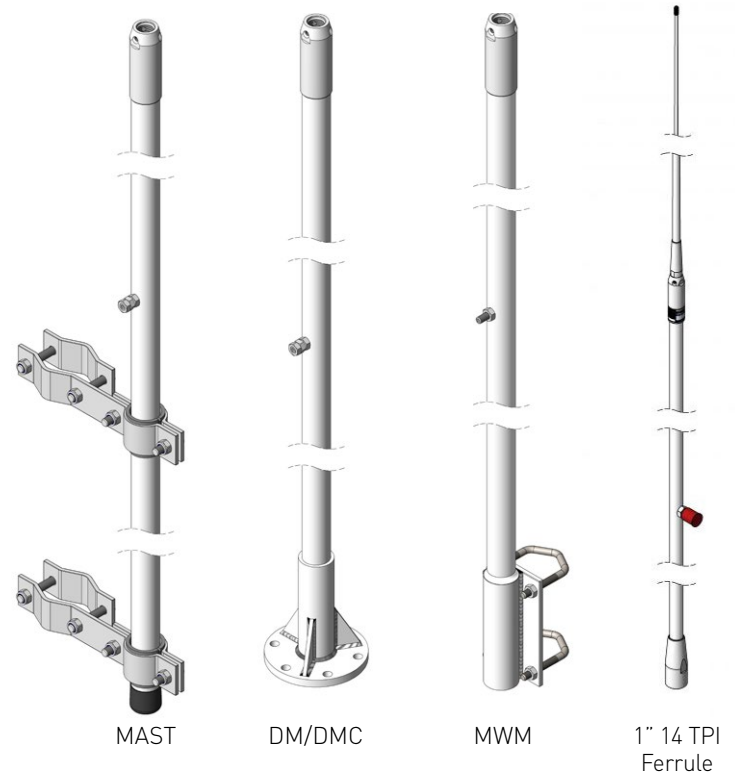
- Excellent RF specifications
- Exceptional material quality
- Works with Automatic Tuner Unit systems
- Side fed
- Available in different versions:
  - Tx/Rx or Rx only: 0.15-30MHz
  - Wire or Coax installations
  - Mast, wall or ferrule mounting
  - 2 or 3 sections
- Ideal land based solutions too

### Specifications

|                        |                |                       |                         |
|------------------------|----------------|-----------------------|-------------------------|
| Frequency<br>1.4-30MHz | Power<br>1000W | Max HF Voltage<br>9kV | IP<br>66                |
| Sections<br>2          | Length<br>7m   | Weight<br>3.0kg       | Static Capacity<br>80pF |



## Installation Types



Installation guides are available at: [www.acantennas.com](http://www.acantennas.com)

## MF/HF combinations

More than 100 KUM combinations.  
Choose between length, sections, installation...

| Models [names] | Length [approx. m] | 2 parts | 3 parts | Mast mount | MastWallMount [MWM models] | DeckMount [DM models] | 1" ferrule | Wire Instal. [Tx/Rx] | Coax Instal. -1:Tx/Rx -2: Rx only |
|----------------|--------------------|---------|---------|------------|----------------------------|-----------------------|------------|----------------------|-----------------------------------|
| KUM48X         | 5                  | KUM480  | -       | KUM480     | KUM480MWM                  | -                     | KUM481     | KUM48X               | KUM48X-1 or -2                    |
| KUM6XX         | 6                  | KUM600  | KUM603  | KUM60X     | KUM60XMWM                  | -                     | KUM601     | KUM60X               | KUM60X-1 or -2                    |
| KUM7XX         | 7                  | KUM700  | KUM703  | KUM70X     | KUM70XMWM                  | -                     | KUM701     | KUM70X               | KUM70X-1 or -2                    |
| KUM8XX         | 8                  | KUM850  | KUM803  | KUM80X     | KUM8XXMWM                  | KUM8XXDM              | -          | KUM8XX               | KUM8XX-1 or -2                    |
| KUM9XX         | 9                  | KUM950  | KUM903  | KUM90X     | KUM9XXMWM                  | KUM9XXDM              | -          | KUM9XX               | KUM9XX-1 or -2                    |

## KUM examples:

|             |                                                                                                       |
|-------------|-------------------------------------------------------------------------------------------------------|
| KUM600-2    | 6 meters, 2 parts, max. 750W, for mast mounts (1xKUM095-SET), Coax installation, Rx-only (0.15-30MHz) |
| KUM803-1DM  | 8 meters, 3 parts, max. 1200W, deck mount included, Coax installation, Tx/Rx (1.4-30MHz)              |
| KUM950-1MWM | 9 meters, 2 parts, max. 1200W, mast wall mount included, Coax installation, TX/Rx (1.4-30MHz)         |

Note: Please contact AC Antennas for more information.

**NUKA ARCTICA, SEA TRIAL VESSEL FOR KUM121  
APRIL—JUNE 2016.**



**SEA TRIAL CONDUCTED WITH COBHAM SATCOM  
BETWEEN DENMARK AND GREENLAND.**



## KUM121

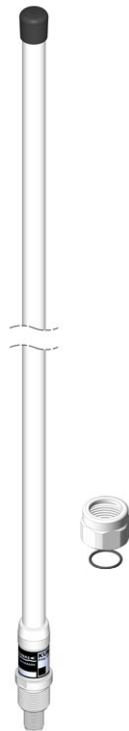
212100-T

Professional HF-antenna recommended by major radio manufacturers. KUM121 is a high quality omnidirectional active receiving HF antenna with excellent dynamic range in the entire bandwidth. Excellent for communication, weather fax and positioning data.

- RX only
- Excellent RF specifications
- Exceptional material quality
- Low noise figure
- Diode protection of RF and DC inputs
- Grounded through mounting base
- Ideal for land based solutions too

### Specifications

|                |                    |             |               |
|----------------|--------------------|-------------|---------------|
| Frequency      | DC Shorted         | DC Grounded | IP            |
| 0.15-30MHz     | No                 | Yes         | 68            |
| Connector      | Length             | Weight      | IP2           |
| UHF            | 1.3m               | 0.5kg       | ≥+50dBm       |
|                |                    |             | IP3           |
|                |                    |             | ≥+28dBm       |
| Supply Voltage | Max Supply Current | Max Output  | Thread        |
| 9-12V          | 35 mA              | +10dBm      | 1" and ISO-G1 |



## KUM041

204100-T

KUM041 is a high quality omnidirectional active receiving HF antenna with excellent dynamic range in the entire bandwidth. Excellent for weather fax and positioning data.

- RX only
- Excellent RF specifications
- Exceptional material quality
- Low noise figure
- Diode protection of RF and DC inputs
- Grounded through mounting base
- Ideal for land based solutions too

### Specifications

|                |                    |               |           |
|----------------|--------------------|---------------|-----------|
| Frequency      | DC Shorted         | DC Grounded   | IP        |
| 0.15-30MHz     | No                 | Yes           | 68        |
| Connector      | Length             | Weight        | IP3@10MHz |
| UHF            | 0.36m              | 0.4kg         | ≥+38dBm   |
| Supply Voltage | Max Supply Current | Thread        |           |
| 9-12V          | 30 mA              | 1" and ISO-G1 |           |



## CB6

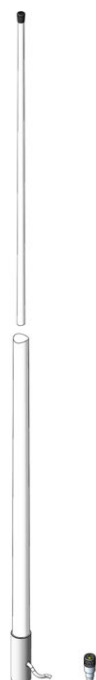
100051-P

Lightweight fibreglass omnidirectional antenna for the citizen band:

- RX only
- Excellent RF specifications
- Exceptional material quality
- Sided

### Specifications

|              |             |           |            |
|--------------|-------------|-----------|------------|
| Frequency    | Gain        | VSWR      | IP         |
| 26.8-27.5MHz | 3 dBd       | <1.5:1    | 66         |
| Cable        | Length      | Weight    | Thread     |
| RG58C/U      | 2.7m        | 0.8kg     | 1" ferrule |
| DC Shorted   | DC Grounded | Connector |            |
| Yes          | No          | UHF       |            |



## NAVTEX3e

400008-T

Professional Navtex receiving antenna.

- RX only
- Selectively receiving the three Navtex frequencies
- Excellent RF specifications
- Exceptional material quality
- Low noise figure
- Diode protection of RF and DC inputs
- Grounded through mounting base
- Ideal for land based solutions too

### Specifications

|                       |                  |            |             |
|-----------------------|------------------|------------|-------------|
| Frequency             | Supply voltage   | IP         |             |
| 0.490/0.518/4.2095MHz | 8-12V            | 68         |             |
| Connector             | Length           | Weight     |             |
| UHF                   | 0.36m            | 0.25kg     |             |
| Current               | Thread           |            |             |
| 10mA                  | 1" and ISO-G1    |            |             |
| IP3 - Low Bands       | IP3 - High Bands | DC Shorted | DC Grounded |
| +28dBm                | +20dBm           | No         | Yes         |



**WE SECURE SAFE AND SEAMLESS  
COMMUNICATION FOR MARINE VESSELS,  
NO MATTER HOW FAR FROM HOME.**



**CX-UHF0-M**

300008-T

For use with radio telephone, two-way business radio and many other applications:

- Excellent RF specifications
- Exceptional material quality
- Designed for harsh environment
- Ideal for land based solutions too
- Various sub bands available (see table)



**Specifications**

|            |             |        |                    |
|------------|-------------|--------|--------------------|
| Frequency  | Gain        | Power  | VSWR               |
| 420-470MHz | 0 dBd       | 220W   | <1.5:1             |
| Connector  | Length      | Weight | Thread             |
| N          | 0.81m       | 0.5kg  | 1"                 |
| DC Shorted | DC Grounded | IP     | Survival Windspeed |
| Yes        | Yes         | 68     | 200 km/h           |

**CX-UHF3-MH**

330009-T

For use with radio telephone, two-way business radio and many other applications:

- Excellent RF specifications
- Exceptional material quality
- Designed for harsh environment
- Ideal for land based solutions too
- Various sub bands available (see table)



**Specifications**

|            |             |        |                    |
|------------|-------------|--------|--------------------|
| Frequency  | Gain        | Power  | VSWR               |
| 440-470MHz | 3 dBd       | 220W   | <1.5:1             |
| Connector  | Length      | Weight | Thread             |
| N          | 1.27m       | 0.6kg  | 1"                 |
| DC Shorted | DC Grounded | IP     | Survival Windspeed |
| Yes        | Yes         | 68     | 200 km/h           |

**CX-UHF Types**

| Product name | Product number | Gain [dBd] | Standard frequency [MHz] VSWR<1.5:1 | Extended frequency [MHz] VSWR<2.0:1 | Maximum frequency [MHz] VSWR<2.5:1 |
|--------------|----------------|------------|-------------------------------------|-------------------------------------|------------------------------------|
| CX-UHF0-L    | 300007-T       | 0          | 380-430                             | 380-435                             | 375-435                            |
| CX-UHF0-M    | 300008-T       | 0          | 420-470                             | 420-475                             | 415-480                            |
| CX-UHF0-H    | 300009-T       | 0          | 460-510                             | 460-515                             | 455-520                            |
| CX-UHF3-LL   | 330006-T       | 3          | 380-410                             | 380-415                             | 375-420                            |
| CX-UHF3-LH   | 330007-T       | 3          | 400-430                             | 395-430                             | 390-430                            |
| CX-UHF3-ML   | 330008-T       | 3          | 420-450                             | 420-455                             | 420-460                            |
| CX-UHF3-MH   | 330009-T       | 3          | 440-470                             | 435-480                             | 435-480                            |
| CX-UHF3-HL   | 330010-T       | 3          | 460-490                             | 460-495                             | 455-500                            |
| CX-UHF3-HH   | 330011-T       | 3          | 480-510                             | 475-515                             | 475-520                            |

The same antenna performs differently across various frequency ranges, reflecting the variability in VSWR as the frequency changes. The VSWR values are mentioned above in the table for the three installation scenarios for the same antenna:

- Standard Frequency: When used within a core frequency range, the antenna exhibits a low VSWR value of <1.5:1. This indicates a very good impedance match, resulting in efficient power transfer and minimal signal reflection.
- Extended Frequency: The antenna performance over an extended band width extension results in a slightly higher VSWR <2.0:1 value for the extended frequency range. The standard frequency band VSWR remains at <1.5:1.
- Maximum Frequency: The maximum frequency range is the widest range for the antenna, and while the VSWR remains below 1.5:1 within the standard frequency range, it degrades outside the core band to maximum VSWR <2.5:1, indicating a slightly high-er mismatch as approaching the edges of the maximum frequency range.

**QUALITY.  
TO PROFESSIONALS.  
BY PROFESSIONALS.**

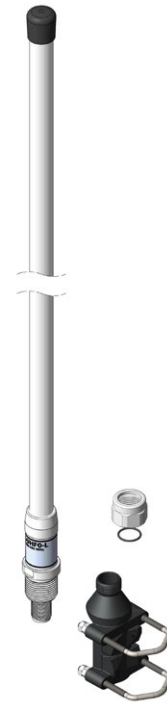


CX-UHFx-xx-A



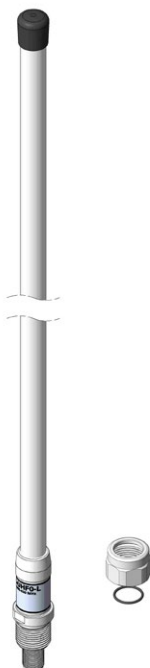
CX-UHF antenna including N275F mount

CX-UHFx-xx-B

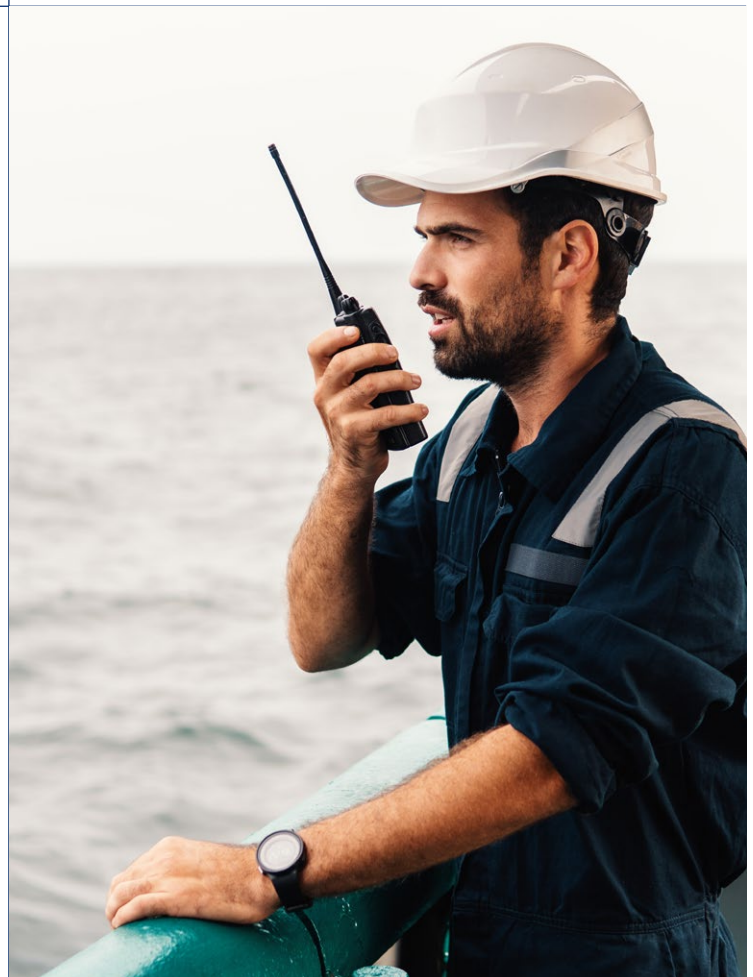


CX-UHF antenna including N274F mount and N239F swivel nut

CX-UHFx-xx-C



CX-UHF antenna including N239F swivel nut



## 4GMultiband

400006-T

Omnidirectional multiband antenna covering the cellular phone network bands simultaneously with data transmission, thus improving the communication performance for e.g. 3G, 4G, CDMA, UMTS, DECT, WLAN, GSM850/900/1800/1900, Bluetooth and EDGE:

- Excellent RF specifications
- Exceptional material quality
- Ideal for land based solutions too



### Specifications

|                                                        |             |                          |               |
|--------------------------------------------------------|-------------|--------------------------|---------------|
| Frequency                                              |             |                          |               |
| A: 790-806, B: 806-960, C: 1710-2500, D: 2500-2690 MHz |             |                          |               |
| Gain                                                   | Power       | VSWR                     |               |
| 0 dBd                                                  | 150W        | A+D: <2.2:1, B+C: <2.0:1 |               |
| Connector                                              | Length      | Weight                   | Thread        |
| N                                                      | 0.5m        | 0.3kg                    | 1" and ISO-G1 |
| DC Shorted                                             | DC Grounded | IP                       |               |
| No                                                     | Yes         | 68                       |               |

## CEL24

460000-T

CEL24 is an omnidirectional antenna for WiFi and other 2.4GHz applications such as IoT. It excels with its maximized performance and superior low-VSWR data:

- Excellent RF specifications
- Exceptional material quality
- Ideal for land based solutions too



### Specifications

|               |             |        |               |
|---------------|-------------|--------|---------------|
| Frequency     |             |        |               |
| 2310-2485 MHz |             |        |               |
| Gain          | Power       | VSWR   |               |
| 7 dBd         | 80W         | <2:1   |               |
| Connector     | Length      | Weight | Thread        |
| N             | 0.9m        | 0.5kg  | 1" and ISO-G1 |
| DC Shorted    | DC Grounded | IP     |               |
| Yes           | Yes         | 68     |               |

## VHF/GPS

490001-T

VHF/GPS is a VHF antenna with a combined helix GPS and GLONASS antenna for frequencies 1575.42 MHz & 1602 MHz incorporated:

- Excellent RF specifications
- Exceptional material quality
- Cable sets with filter options available
- Separate filter available for radios with two antenna ports
- Ideal for land based solutions too



### Specifications

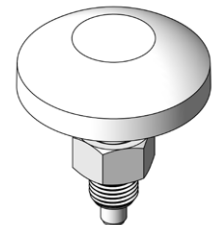
|                                   |                 |                    |               |
|-----------------------------------|-----------------|--------------------|---------------|
| Frequency (MHz)                   |                 |                    | Power         |
| A: 156-162.5, B: 1575.42, C: 1602 |                 |                    | A: 35W        |
| Connector                         | Length          | Weight             | Thread        |
| N                                 | 1.26m           | 0.7kg              | 1" and ISO-G1 |
| Supply voltage                    | Current         | Gain               |               |
| 3.3-18V                           | Max 10, typ 7mA | A:0, B:18, C:18 dB |               |
| DC Shorted                        | DC Grounded     | VSWR               | IP            |
| No                                | Yes             | A: <2:1, B+C: RX   | 68            |

## GNSS

490003-P

Marine and land based global antenna for all five GNSS systems: GPS, Galileo, Glonass, BeiDou, Egnos. The antenna can be installed directly on the deck, it withstands walking pressure:

- RX only
- Excellent RF specifications
- Exceptional material quality
- Ideal for land based solutions too



### Specifications

|                                                                              |                |                            |              |  |
|------------------------------------------------------------------------------|----------------|----------------------------|--------------|--|
| Frequency                                                                    |                |                            |              |  |
| A: GPS (L1), B: Galileo (E1), C: Glonass (G1), D: BeiDou (B1), E: Egnos (L1) |                |                            |              |  |
| Gain                                                                         | Supply voltage | VSWR                       |              |  |
| A+B+C+E: 26dB, D: 25dB                                                       | 2.5-24V        | A+B+C+E: <2.0:1, D: <2.5:1 |              |  |
| Connector                                                                    | Length         | Weight                     | Noise Figure |  |
| SMA                                                                          | 0.05m          | 0.07kg                     | Typ. 0.9dB   |  |
| DC Shorted                                                                   | DC Grounded    | IP                         |              |  |
| No                                                                           | Yes            | 68                         |              |  |

## DAB-FM

400035-T

Professional high quality fiberglass omnidirectional receiving DAB/FM antenna:

- RX only
- Excellent RF specifications
- Exceptional material quality
- Ideal for land based solutions too

### Specifications

|            |                   |        |               |
|------------|-------------------|--------|---------------|
| Frequency  | 88-108/160-250MHz |        |               |
| Connector  | Length            | Weight | Thread        |
| N          | 1.26m             | 0.5kg  | 1" and ISO-G1 |
| DC Shorted | DC Grounded       | IP     |               |
| Yes        | Yes               | 66     |               |



## FAME1

400004-T

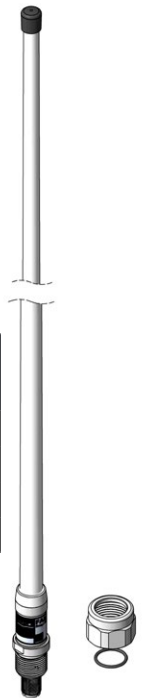
High quality fiberglass omnidirectional receiving DAB/FM/AM antenna:

- RX only
- Excellent RF specifications and material
- Also available in other versions
- Ideal for land based solutions too

| Product name | Product number | Gain [dBd] | Thread [size & type]      |
|--------------|----------------|------------|---------------------------|
| FAME1        | 400004-T       | 0          | 1" 14 TPI & 1 1/4" 11 TPI |
| FAME2        | 400005-P       | 0          | 1" 14 TPI Ferrule         |
| FAME3        | 400012-T       | 3          | 1" 14 TPI & 1 1/4" 11 TPI |
| FAME4        | 400011-P       | 3          | 1" 14 TPI Ferrule         |

### Specifications

|            |                           |        |               |
|------------|---------------------------|--------|---------------|
| Frequency  | 0.15-30/88-108/160-250MHz | Gain   | 0 dBd         |
| Connector  | Length                    | Weight | Thread        |
| UHF        | 1.26m                     | 0.5kg  | 1" and ISO-G1 |
| DC Shorted | DC Grounded               | IP     |               |
| No         | Yes                       | 68     |               |



## UHF/VHF2

400036-T

UHF/VHF2 is an omnidirectional dipole antenna covering two bands, perfect for both marine and land base systems.

- Excellent RF specifications
- Exceptional material quality
- Designed for harsh environment
- Ideal for land based solutions too

### Specifications

|               |                                           |        |               |
|---------------|-------------------------------------------|--------|---------------|
| Frequency VHF | A: 146.0-162.5, B: 420-430, C: 430-440MHz |        |               |
| Gain          | Power                                     |        |               |
| 0 dBd         | A: 150W, B+C: RX                          |        |               |
| VSWR          | A: <1.5:1, B: <3.5:1, C: <5:1             |        |               |
| Connector     | Length                                    | Weight | Thread        |
| N             | 1.26m                                     | 0.5kg  | 1" and ISO-G1 |
| DC Shorted    | DC Grounded                               | IP     |               |
| Yes           | Yes                                       | 68     |               |



## FAME3

400012-P

High quality fiberglass omnidirectional receiving DAB/FM/AM antenna:

- RX only
- Excellent RF specifications and material
- Also available in other versions
- Ideal for land based solutions too

### Specifications

|            |                           |        |               |
|------------|---------------------------|--------|---------------|
| Frequency  | 0.15-30/88-108/160-250MHz | Gain   | 3 dBd         |
| Connector  | Length                    | Weight | Thread        |
| UHF        | 2.7m                      | 1.4kg  | 1" and ISO-G1 |
| DC Shorted | DC Grounded               | IP     |               |
| No         | Yes                       | 68     |               |



**MORE THAN 90% OF OUR ORDERS  
ARE SHIPPED WITHIN 48 HOURS.**





**N270F**

900017-B



- Heavy Duty Pole Ø25-74mm
- Solid Brass, White
- 1.4kg ISO-G1, male

**N274FW**

900061-B



- Universal Pole Ø20-58mm
- Anodised Aluminium, White
- 0.6kg ISO-G1, male

Option Black N274F

**N275F**

900018-B



- Universal Pole Ø20-58mm
- Anodised Aluminium, Black
- 0.6kg 1" 14 TPI, female

Option White N275FW

**N298F**

900027-P



- Universal Pole Ø26-46mm
- Stainless Steel SS316
- 0.7kg ISO-G1, male

**N171F**

900006-B



- Universal Pole Ø30-61mm
- SS316
- 0.5kg 1"-14 TPI, female
- Option with ferrule bolt: N171FB

**N172F**

900008-B



- Universal Pole Ø30-61mm
- SS316 Alignment beads
- 0.6kg 1"-14 TPI, female
- Option with ferrule bolt: N172FB

**N173F**

900010-B



- Universal Pole Ø49-90mm
- SS316 Alignment beads
- 0.7kg 1"-14 TPI, female
- Option with ferrule bolt: N173FB

**N174F**

900057-B



- Universal Pole Ø30-61mm
- SS316 Alignment beads
- 0.7kg 1"-14 TPI, female
- Option with ferrule bolt: N174FB

**E180F**

900038-B



- Deck
- Stainless Steel SS316
- 0.5kg ISO-G1, male

**E179F**

900037-B



- Deck
- Chrome Brass
- 0.5kg ISO-G1, male

**N285F**

900044-B



- 4-way Ratchet Deck/wall
- Chrome Brass
- 1.0kg 1"-14 TPI, male

**N286Fe**

900064-B



- 4-way Ratchet Deck/wall
- Stainless Steel SS316
- 0.6kg 1"-14 TPI, male

**SOLD BY 300+ MAJOR PLAYERS WORLDWIDE.**



**RECOMMENDED AND USED BY  
ALL MAJOR GLOBAL RADIO MANUFACTURERS  
TO THE PROFESSIONAL MARITIME MARKET.**

### N288F

900046-B



- Deck
- Stainless Steel SS304
- 0.2kg 1"-14 TPI, male

### N220F

900013-P



- Universal Pole Ø26-46mm
- Stainless Steel SS316
- 0.5kg 1"-14 TPI, male

### N157F

900002-P



- Universal Pole Ø20-26mm
- SS316 Ø5/8" & Ø1"
- 0.2kg 1"-14 TPI, female

Option with ferrule bolt: N158F

### N162F

900004-P

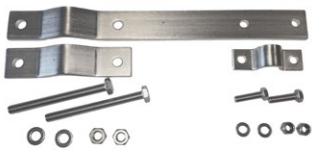


- Universal Pole
- SS304 Ø5/8" & Ø1"
- 0.2kg 1"-14 TPI, female

Option angle bracket only: N163F

### N095F-SET

900068-T



- Pole Clamp Ø30-100mm
- SS316
- 2.2kg Ø21mm radome
- Note: Set of 2 x N095F per antenna

Photo: 1 x N095F

### N115F-SET

900067-T



- Pole Clamp Ø38-70mm
- SS316
- 3.4kg Ø40mm radome w/sleeve
- Note: Set of 2 x N115F per antenna

Photo: 1 x N115F

### N245F

900039-P



- Pole Clamp Ø31-60mm
- SS304
- 0.4kg Fits e.g. CX4-3

### H022F

990013-A



- Insulator
- PBT 100 kV
- 0.25kg 9 kN

Option 63 kV: H023F

### N280-01F

900019-P



- Adaptor Lateral Cable Hole
- Chrome Brass
- 0.2kg
- 2 \* 1"-14 TPI, female

### N280-03F

900021-P



- Adaptor Lateral Cable Hole
- Chrome Brass
- 0.4kg
- 1" 14 TPI female & ISO-G1, male

### N280-04F

900022-P



- Adaptor
- Chrome Brass
- 0.3kg
- 1" 14 TPI female & ISO-G1, male

### N280F

990009-P



- Adaptor & Cable Lateral Cable Hole
- Chrome Brass UHF male
- 0.6kg RG58 cable 6m
- 1" 14 TPI female & ISO-G1, male

## CA-HFWIRE10MM

920074-B ... 920080-D



### HF instalations wire, black

- 10mm<sup>2</sup> strands
- Flame retardent
- Halogen free
- Recommended as feeder wire for KUM antennas

Different lenghts available

| Product name incl. length | Product number |
|---------------------------|----------------|
| CA-HFWIRE10MM-B-10m       | 920074-B       |
| CA-HFWIRE10MM-B-20m       | 920075-B       |
| CA-HFWIRE10MM-B-30m       | 920076-B       |
| CA-HFWIRE10MM-B-40m       | 920077-B       |
| CA-HFWIRE10MM-B-50m       | 920078-B       |
| CA-HFWIRE10MM-B-100m      | 920079-D       |
| CA-HFWIRE10MM-B-500m      | 920080-D       |

## CA-HF400

920081-D ... 920086-B



### HF400 cable, black

- 50 Ohm RF low loss coaxial cable
- Flame retardent
- Halogen free
- Recommended as replacement for RG213U coaxial cable

Different lenghts available

| Product name incl. length | Product number |
|---------------------------|----------------|
| CA-HF400-B-10m            | 920082-B       |
| CA-HF400-B-20m            | 920083-B       |
| CA-HF400-B-30m            | 920084-B       |
| CA-HF400-B-40m            | 920085-B       |
| CA-HF400-B-50m            | 920086-B       |
| CA-HF400-B-70m            | 920081-D       |

## CA-RG213U

920060-P ... 920066-D



### RG213U cable, black

- 50 Ohm RF coaxial cable
- MIL-C-17F
- Color: black

Different lenghts available

| Product name incl. length | Product number |
|---------------------------|----------------|
| CA-RG213U-B-10m           | 920060-B       |
| CA-RG213U-B-20m           | 920061-B       |
| CA-RG213U-B-30m           | 920062-B       |
| CA-RG213U-B-40m           | 920063-B       |
| CA-RG213U-B-50m           | 920064-B       |
| CA-RG213U-B-100m          | 920065-D       |
| CA-RG213U-B-500m          | 920066-D       |

## CA-RG214U

920067-P ... 920073-D



### RG214U cable, black

- Double Screened
- 50 Ohm RF coaxial cable
- MIL-C-17F
- Recommended for long coaxial connections

Different lenghts available

| Product name incl. length | Product number |
|---------------------------|----------------|
| CA-RG214U-B-10m           | 920067-B       |
| CA-RG214U-B-20m           | 920068-B       |
| CA-RG214U-B-30m           | 920069-B       |
| CA-RG214U-B-40m           | 920070-B       |
| CA-RG214U-B-50m           | 920071-B       |
| CA-RG214U-B-100m          | 920072-D       |
| CA-RG214U-B-500m          | 920073-D       |

## CA-RG58CU

920039-P ... 920045-D



### RG58CU cable, white

- 50 Ohm RF coaxial cable
- MIL-C-17F
- Color: white

Different lenghts available

| Product name incl. length | Product number |
|---------------------------|----------------|
| CA-RG58CU-W-10m           | 920039-P       |
| CA-RG58CU-W-20m           | 920040-P       |
| CA-RG58CU-W-30m           | 920041-P       |
| CA-RG58CU-W-40m           | 920042-P       |
| CA-RG58CU-W-50m           | 920043-B       |
| CA-RG58CU-W-100m          | 920044-D       |
| CA-RG58CU-W-500m          | 920045-D       |

## CA-RG58CU

920046-P ... 920052-D



### RG58CU cable, black

- 50 Ohm RF coaxial cable
- MIL-C-17F
- Color: black

Different lenghts available

| Product name incl. length | Product number |
|---------------------------|----------------|
| CA-RG58CU-B-10m           | 920046-P       |
| CA-RG58CU-B-20m           | 920047-P       |
| CA-RG58CU-B-30m           | 920048-P       |
| CA-RG58CU-B-40m           | 920049-P       |
| CA-RG58CU-B-50m           | 920050-B       |
| CA-RG58CU-B-100m          | 920051-D       |
| CA-RG58CU-B-500m          | 920052-D       |

## CA-RG59BU

920053-P ... 920059-D



### RG59BU cable, black

- 75 Ohm RF coaxial cable
- MIL-C-17F
- Color: black

Different lenghts available

| Product name incl. length | Product number |
|---------------------------|----------------|
| CA-RG59BU-B-10m           | 920053-P       |
| CA-RG59BU-B-20m           | 920054-P       |
| CA-RG59BU-B-30m           | 920055-P       |
| CA-RG59BU-B-40m           | 920056-B       |
| CA-RG59BU-B-50m           | 920057-B       |
| CA-RG59BU-B-100m          | 920058-D       |
| CA-RG59BU-B-500m          | 920059-D       |

## WIREKIT-02

992001-P



Wire installation kit for MH/HF antenna systems consists of CA-HFWIRE10MM, tube clamp, shackles, insulator, cable clamps and wire clamps. Recommended for MF/HF radio installations up to 500W.

Option: WIREKIT-01, 250W

### HF400-N

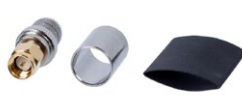
910034-A



|           |                 |
|-----------|-----------------|
| Connector | HF400           |
| Crimp     | Resistance 50 Ω |
| 0.03kg    | N-male          |

### HF400-SMA

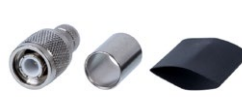
910035-A



|           |                 |
|-----------|-----------------|
| Connector | HF400           |
| Crimp     | Resistance 50 Ω |
| 0.01kg    | SMA-male        |

### HF400-TNC

910036-A



|           |                 |
|-----------|-----------------|
| Connector | HF400           |
| Crimp     | Resistance 50 Ω |
| 0.02kg    | TNC-male        |

### HF400-FME

910039-A



|           |                 |
|-----------|-----------------|
| Connector | HF400           |
| Crimp     | Resistance 50 Ω |
| 0.02kg    | FME-male        |

### N

910001-A



|           |                 |
|-----------|-----------------|
| Connector | RG213/RG214     |
| Crimp     | Resistance 50 Ω |
| 0.03kg    | N-male          |

### K008F

910009-A



|           |                 |
|-----------|-----------------|
| Connector | RG213/RG214     |
| Crimp     | Resistance 50 Ω |
| 0.02kg    | UHF-male        |

### K020F

910006-A



|           |                 |
|-----------|-----------------|
| Connector | RG213/RG214     |
| Crimp     | Resistance 50 Ω |
| 0.02kg    | BNC-male        |

### K025F

910005-A



|           |                 |
|-----------|-----------------|
| Connector | RG213/RG214     |
| Crimp     | Resistance 50 Ω |
| 0.02kg    | TNC-male        |

### K015F

910007-A



|           |                 |
|-----------|-----------------|
| Connector | RG58            |
| Crimp     | Resistance 50 Ω |
| 0.03kg    | N-male          |

### K009F

910008-A



|           |                 |
|-----------|-----------------|
| Connector | RG58            |
| Crimp     | Resistance 50 Ω |
| 0.02kg    | UHF-male        |

### BNC

910000-A



|           |                 |
|-----------|-----------------|
| Connector | RG58            |
| Crimp     | Resistance 50 Ω |
| 0.01kg    | BNC-male        |

### TNC

910003-A



|           |                 |
|-----------|-----------------|
| Connector | RG58            |
| Crimp     | Resistance 50 Ω |
| 0.01kg    | TNC-male        |

### K007F

910010-A



|           |                 |
|-----------|-----------------|
| Connector | RG58/RG213      |
| Solder    | Resistance 50 Ω |
| 0.03kg    | UHF-male        |

### FME

910014-A



|           |                 |
|-----------|-----------------|
| Connector | RG58            |
| Crimp     | Resistance 50 Ω |
| 0.01kg    | FME-male        |

### K030F

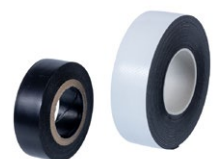
910004-A



|           |                 |
|-----------|-----------------|
| Connector | RG58            |
| Crimp     | Resistance 50 Ω |
| 0.01kg    | SMA-male        |

### TAPE

993000-A ... 993001-A



| Product name | Product number | Type       |
|--------------|----------------|------------|
| TAPE-01      | 993000-A       | Vulcanized |
| TAPE-02      | 993001-A       | Electrical |

## Gain Reference

Gain is one of the main parameters of an antenna. The gain of an antenna is a figure stating how much energy this antenna transmits/receives in the main direction, compared to a reference antenna.

$$\text{Gain} = 10 \log \left( \frac{\text{ant.}}{\text{reference ant.}} \right)$$

Hypothetical the reference antenna is isotropic, which uniformly distributes energy in all directions.

This gain is stated as dBi.

Normally the reference antenna is a half wave dipole antenna and then the unit is dBd.

Conversion between the two follows this simple equation:

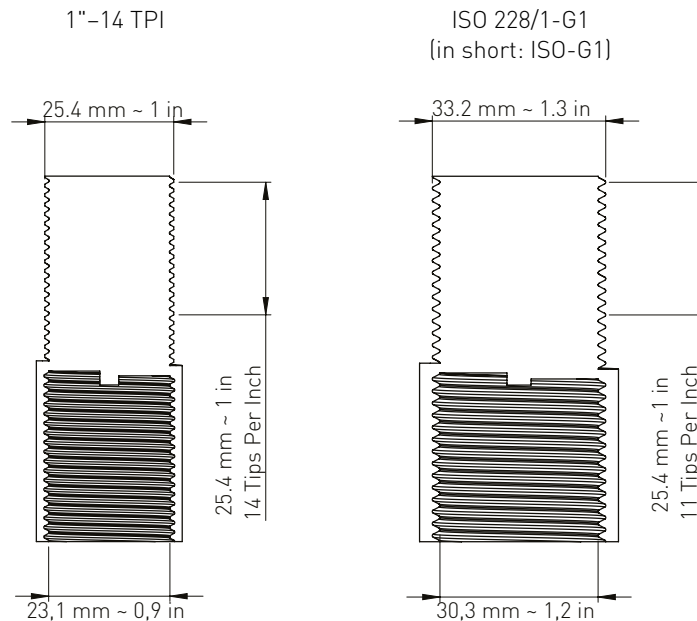
$$\text{dBd} = \text{dBi} - 2.15$$

For marine use in most countries the gain is mentioned in "marine" dB which is non-existing. However, as the competition is using "marine" dB, AC Marine has decided to indicate gain in dBd and "marine" dB.

Below please find a table of relationship between dBd, dBi and "Marine" dB.

| dBd | dBi | Marine dB |
|-----|-----|-----------|
| 0   | 2.1 | 3         |
| 3   | 5.1 | 6         |
| 4.5 | 6.6 | 9         |
| 5   | 7.1 | 10        |

## Mount Reference



**MORE THAN 50 YEARS IN BUSINESS.  
THANKS TO OUR CUSTOMERS.**



Our products are designed and manufactured to provide exceptional performance and to withstand punishment from the rigorous marine environment.

We use latest generation of technology to continue pushing technical performance for the betterment of our products. Navigating complexity, unlocking potential.

We are cost effective and deliver on time. Always.

Welcome to AC Antennas.

# **BASIC JAPAN**

Basic Japan株式会社 Sugimami Tokyo, Japan

Phone: 03-5335-7651

E-mail: [mail@basicjp.com](mailto:mail@basicjp.com)

URL: [www.basicjp.com](http://www.basicjp.com)

Latest version of  
this catalogue at:



# **AC ANTENNAS**

 WE CONNECT THE WORLD

Fabriksparken 40. DK-2600 Glostrup. Denmark

+45 4581 0413. [acantennas@acantennas.com](mailto:acantennas@acantennas.com)

[www.acantennas.com](http://www.acantennas.com)